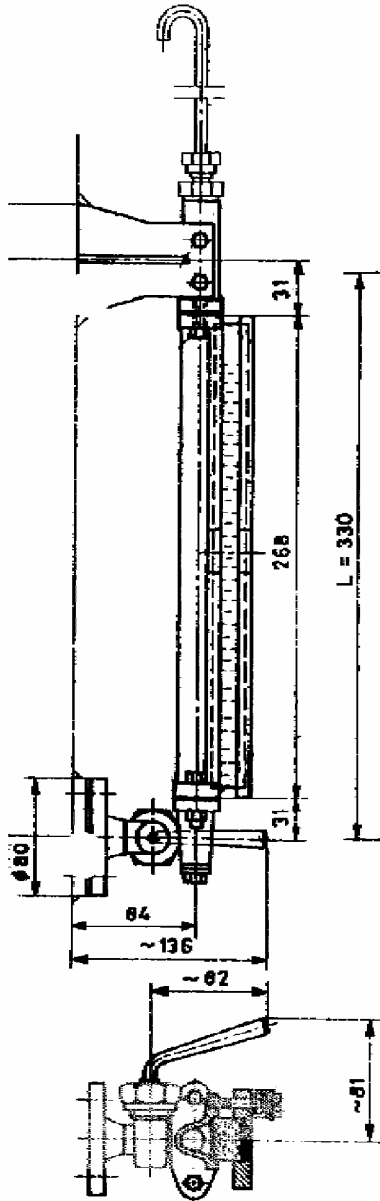


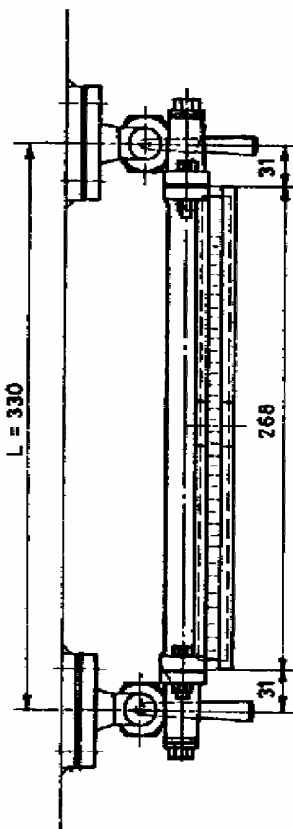
**VERSION A**

FOR WATER



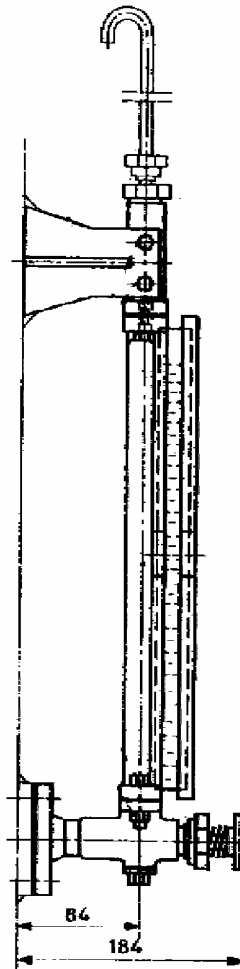
**VERSION B**

FOR WATER



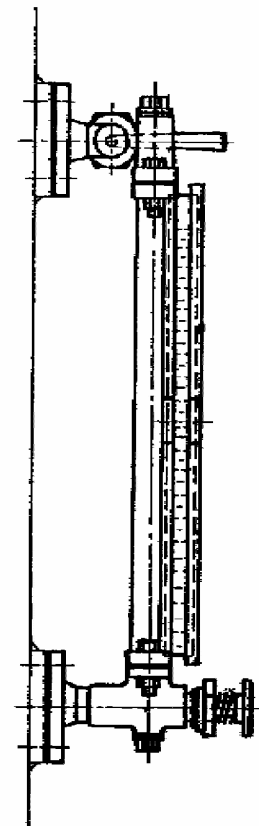
**VERSION C**

FOR OIL



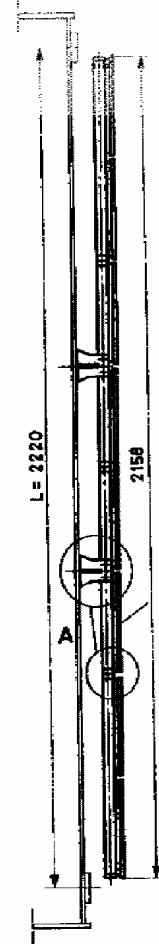
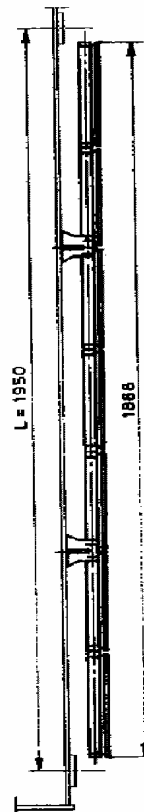
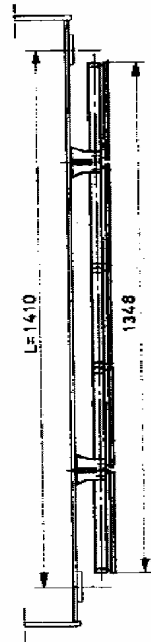
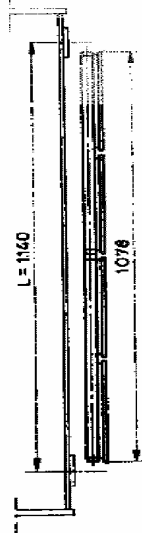
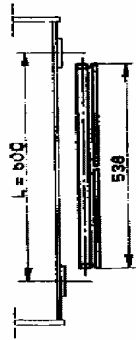
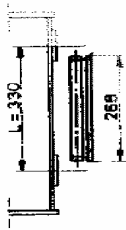
**VERSION D**

FOR OIL

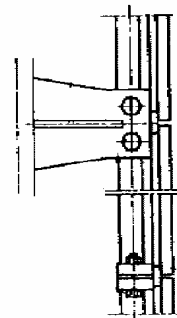


Materials : bodies CuSn5Zn5Pb5 (EN 1982:1998)  
Glass : borosilicate reflex glass (Boral or Schott Maxos)  
dimension 250 x 30 x 17

Compatible with : SB 5801, SB 51252, SB 71033, SB71067



DETAIL A



| POZ. | pcs |    |    |                    | NAME           | STANDARD    | for size :     |                |
|------|-----|----|----|--------------------|----------------|-------------|----------------|----------------|
|      | A   | B  | C  | D                  |                |             |                |                |
| 1    | 1   | 1  | 1  | 1                  | SINGLE ELEMENT | SB 5802     | CuSn5Pb5Zn5    | 330            |
|      | -   | -  | -  | -                  |                |             |                | 600            |
|      | 3   | 3  | 3  | 3                  |                |             |                | 870            |
|      | -   | -  | -  | -                  |                |             |                | 1140           |
|      | 1   | 1  | 1  | 1                  |                |             |                | 1410           |
|      | -   | -  | -  | -                  |                |             |                | 1680           |
|      | 3   | 3  | 3  | 3                  |                |             |                | 1950           |
|      | -   | -  | -  | -                  |                |             |                | 2220           |
|      | -   | -  | -  | -                  |                |             |                | 330            |
| 2    | 1   | 1  | 1  | 1                  | DUBLE ELEMENT  | SB 5803     | CuSn5Pb5Zn5    | 600            |
|      | -   | -  | -  | -                  |                |             |                | 870            |
|      | 2   | 2  | 2  | 2                  |                |             |                | 1140           |
|      | 2   | 2  | 2  | 2                  |                |             |                | 1410           |
|      | 3   | 3  | 3  | 3                  |                |             |                | 1680           |
|      | 2   | 2  | 2  | 2                  |                |             |                | 1950           |
|      | 4   | 4  | 4  | 4                  |                |             |                | 2220           |
| 3    | 1   | 1  | -  | LOWER COCK         | SB 71052       | CuSn5Pb5Zn5 | OD 330 DO 2220 |                |
| 4    | -   | 1  | -  | UPPER COCK         | SB 71054       | CuSn5Pb5Zn5 | OD 330 DO 2220 |                |
| 5    | -   | -  | 1  | SELF CLOSING VALVE | SB 71056       | CuSn5Pb5Zn5 | OD 330 DO 2220 |                |
| 6    | 1   | -  | 1  | UPPER CONECTION    | SB 5807        | CuSn5Pb5Zn5 | OD 330 DO 2220 |                |
| 7    | 2   | -  | 2  | -                  | SUPPORT        | SB 5808     | steel          | OD 330 DO 1140 |
|      | 6   | 4  | 6  | 4                  |                |             |                | 1410           |
|      | 4   | 2  | 4  | 2                  |                |             |                | 1680           |
|      | 6   | 4  | 6  | 4                  |                |             |                | 1950 i 2220    |
| 8    | 2   | 4  | 2  | 4                  | SCREW          | M 8 X 30    | galv.steel     | 330 i 600      |
|      | 6   | 8  | 6  | 8                  |                |             |                | 870            |
|      | 4   | 6  | 4  | 6                  |                |             |                | 1140           |
|      | 6   | 8  | 6  | 8                  |                |             |                | 1410 i 1680    |
|      | 10  | 12 | 10 | 12                 |                |             |                | 1950           |
|      | 8   | 10 | 8  | 10                 |                |             |                | 2220           |
| 9    | 2   | 4  | 2  | 4                  | NUTT           | M 8         | galv.steel     | 330 i 600      |
|      | 6   | 8  | 6  | 8                  |                |             |                | 870            |
|      | 4   | 6  | 4  | 6                  |                |             |                | 1140           |
|      | 6   | 8  | 6  | 8                  |                |             |                | 1410 i 1680    |
|      | 10  | 12 | 10 | 12                 |                |             |                | 1950           |
| 8    | 10  | 8  | 10 | 2220               |                |             |                |                |
| 10   | 2   | -  | 2  | -                  | SCREW          | M 8 X 22    | galv.steel     | OD 330 DO 2220 |
| 11   | 4   | -  | 4  | -                  | SCREW          | M 8 X 15    | galv.steel     | OD 330 DO 1140 |
|      | 12  | 8  | 12 | 8                  |                |             |                | 1410           |
|      | 8   | 4  | 8  | 4                  |                |             |                | 1680           |
|      | 12  | 8  | 12 | 8                  |                |             |                | 1950 i 2220    |
| 12   | 2   | 2  | 2  | 2                  | SEALING        | SB 5809     |                | 330 i 600      |
|      | 4   | 4  | 4  | 4                  |                |             |                | 870            |
|      | 3   | 3  | 3  | 3                  |                |             |                | 1140           |
|      | 4   | 4  | 4  | 4                  |                |             |                | 1410 i 1680    |
|      | 6   | 6  | 6  | 6                  |                |             |                | 1950           |
| 5    | 5   | 5  | 5  | 2220               |                |             |                |                |
| 13   | 1   | 1  | 1  | 1                  | LEVEL GAGUE    | SB 5810     | Cu Zn 37       | OD 330 DO 2220 |